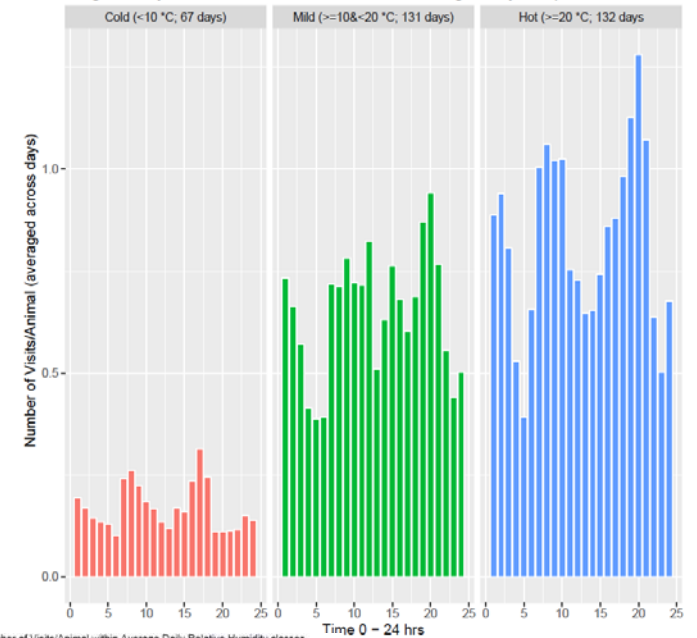


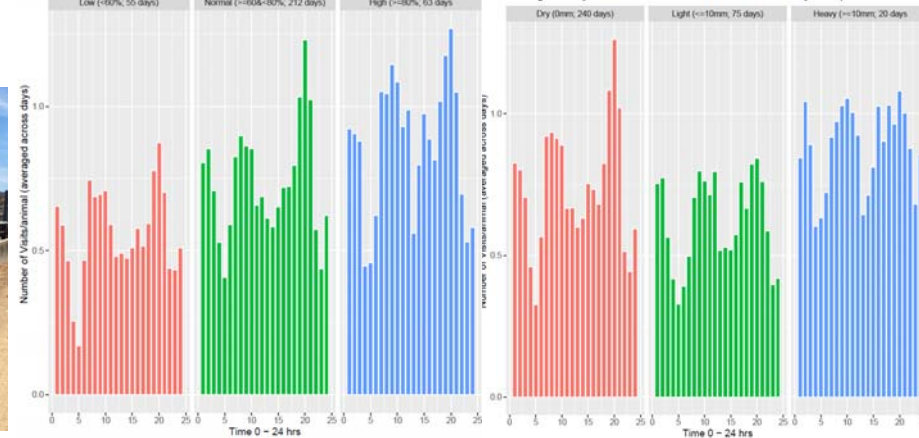
Impact of environmental conditions on GreenFeed access in feedlot steers

- 1535 steers, across 6 breeds
- Average daily temperature 4.39°C to 27.75°C
- Relative humidity from 19.68% to 99.90%
- Daily precipitation 0mm to 56mm
- Data from getraw (C-lock API) – every RFID read
- Visits increased with increasing temperature ($R^2=0.34$) but pattern of use tended not to vary
- No association between visits and relative humidity ($R^2 < 0.01$) or precipitation ($R^2 = 0.11$)

Average Hourly Number of Visits/Animal within Average Daily Temperature classes



Average Hourly Number of Visits/Animal within Average Daily Relative Humidity classes



Average Hourly Number of Visits/Animal within Total Daily Precipitation classes

